

# Perforators

## Dating & Numbering Models

### Features

Precision, security, reliability, fast, convenient, easy to operate & rugged construction. Easy to replace die block. Up to 3 lines perforation can be perforated at a single operation.

- Heavy-duty electric
- Model 112-905 (Pin)
  - Model 112-905L (Lever)



- Universal electric
- Model 10-905 (Pin)
  - Model 10-905L (Lever)



- Manual type
- Model 208-905 (Pin)
  - Model 207-905L (Lever)



Model 112-905L



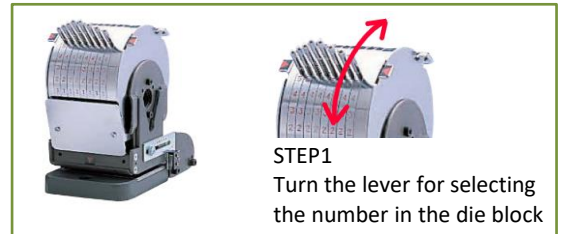
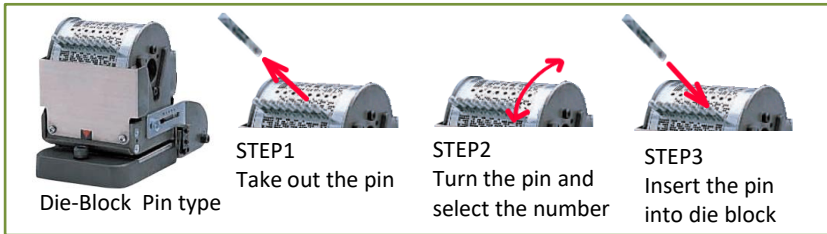
Model 10-905



Model 207-905L

### Recommended Applications

Issuance/receipt/manufacturing date of certificates, applications, written requests, delivery statements, warehouse in/out documentation, chits etc.

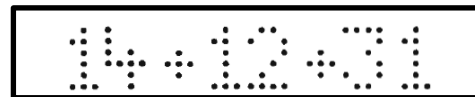


For easier number or character changes, a "pin system" model is recommended when perforating date, and a "lever sliding system" for changing numbers frequently. Perforation option: Date, PAID & Date, PAID & Date and lower text, Top & Date & lower text.

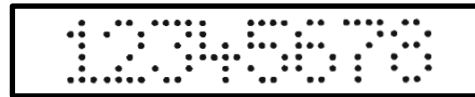
### Actual size perforation sample



PAID/Date 10-digit (NeedleΦ1.0)



Date 8-digit (NeedleΦ1.0 × 6 dots)



Number 8-digit (NeedleΦ1.0 × 6 dots)

Model	Heavy-duty electrically type 112-905/112-905L	Universal electrically type 10-905/10-905L	Manual type 208-905/207-905L
Dimensions (mm)	277(W) x 436(D) x 308(H)	240(W) x 340(D) x 265(H)	214(W) x 295(D) x 229(H) (485 incl. handle)
Weight	40.5/42.5kg	23.3/25.3kg	12.7/14.7kg
Perforating Ability	30 sheets of 64gs/m <sup>2</sup> paper when 8-digits are perforated	20 sheets of 64gs/m <sup>2</sup> paper when 8-digits are perforated	15 sheets of 64gs/m <sup>2</sup> paper when 8-digits are perforated
Power Requirements	100V, 110V, 120V, 220V, 230V, 240V 50/60Hz Other voltage available on request		—
Use mode	"CONTINUOUS USE" mode or "SINGLE USE" mode by key switch	"SINGLE USE" mode only Duty Cycle 30 minutes	—
Die-block	905-112/905L-112	905-10/905L-10	905-208/905L-207