

At your side.
brother®

P-touch 2700

Professional Labelling Solution

Brother | P-touch 2700

MAX EAVES



P-touch LABELS
TESTED
TO THE EXTREME ✓



Always at your side



Brother P-touch labels have been subjected to a series of rigorous tests which prove that even when they're exposed to extreme conditions our labels have been designed to last.



Laminated

Laminated – our unique laminated tape technology ensures that a layer of super-clear polyethylene laminate protects your text.



Temperature Resistant

Temperature Resistant – P-touch labels can withstand extreme temperatures, from -80°C to 150°C .



Strong Adhesion

Strong Adhesion – specially developed adhesive means P-touch labels will stay firmly affixed to a wide range of surfaces.



Abrasion Resistant

Abrasion Resistant – In the P-touch abrasion test using a 1kg sanding device, lettering remained completely intact, only the protective layer was slightly scratched.



Chemical Resistant

Chemical Resistant – after being submerged for 2 hours in a variety of chemical substances, no change in appearance or structure of P-touch labels occurred and the labels remained affixed.



Water Resistant

Water Resistant – after submersion in water over a long period, the tape structure and adhesive strength of P-touch labels remained unchanged.



Fade Resistant

Fade Resistant – after a year in a simulated sunny climate P-touch labels showed very little change visible to the naked eye.



Easy Peel

Easy Peel – enables convenient removal of the tape backing before applying the label.

Technical Information

Hardware

Housing Dimensions	179.5 mm (W) x 247.9 mm (D) x 71.8 mm (H)
Housing Weight	850g
Housing Design	Desktop
Housing Colour	Silver & Black
Keyboard	QWERTY
Number of Keys	67
Cutter	Automatic
Power	AA Alkaline Batteries x 8 or AC Adapter (Model AD-3000 included)
LCD	16 chr x 3 line (Graphical display), 128 dots x 48 dots, Back Light
Included Items	User Guide, Software Installation Guide (Windows/Mac), CD-ROM- Printer driver, P-touch Editor 4.2 (Win) & 3.2.9 (Mac), P-touch Quick Editor 2.0 (Win) & 1.2.9 (Mac), 24 mm Black on White Tape (5m), AC adapter (Model AD-3000), USB cable
Tape Type	TZ-tape
Tape Size	3.5 / 6 / 9 / 12 / 18 / 24 mm
Print Head	180 dpi
Print Speed	10mm / sec.

Built-In Software

Fonts	8 fonts (Helsinki, Brussels, US, Florida, Belgium, San Diego, Los Angeles, Calgary)
Characters	329
Symbols	120
Max. Print Height	18.1mm
Character Size (Pts)	8 sizes (6, 9, 12, 18, 24, 36, 42 and extra BIG)
Label Length Setting	30mm - 300mm
Multi - Line	7 lines
Multi - Block	Yes
Tab Function	Yes
Text Buffer	280
Memory	2800 chrs (99 areas)
Type Style	Normal / Bold / Outline /Shadow / Solid / Italic / Italic Bold / Italic Outline / Italic Solid / Italic Shadow
Framing & Fill Pattern	17 Frames, 3 Patterns
Barcode	CODE39, CODE128, EAN8, EAN13, EAN128, UPC-A, UPC-E, I-2/5(ITF), CODABAR
Copy Printing	1 ~ 99
Mirror Printing	Yes
Vertical Printing	Yes
Numbering	99
Auto Formats	Block Layouts (24 layouts), Templates (17 formats)
Battery Weak Display	Yes
Unit Change	Yes (cm / inch)
Auto Power Off	Yes
Print Image Preview	Yes

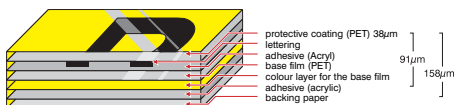
Minimum System Requirements (for computer connection)

Interface	USB 1.1 or 2.0
Computer OS	PC installed with Microsoft® Windows® 98SE/Me/2000 Professional/XP Macintosh series with USB port installed with Mac OS 9.1x, Mac OS X 10.1- 10.4.4
Display	SVGA High colour graphics support or higher

Why do Brother P-touch labels last longer ?

Unlike ordinary labels, Brother's patented laminated tape technology ensures that a layer of super clear polyethylene laminate protects your text. Our laminated tapes consist of six layers of materials, resulting in a thin, extremely strong label.

Characters formed with thermal transfer ink are actually printed on the underside of the laminate and sandwiched between layers of PET (polyester film). This lets you create characters that are virtually indestructible on labels that stand the test of time.



Brother Laminated Tape Construction

Tape Widths



Contact:



At your side.
brother.

Brother International (Aust) Pty Ltd

Web-site: www.brother.com.au Technical Help Web-site: <http://solutions.brother.com>

NSW/ACT 7 Khartoum Rd. North Ryde NSW 2113 Phone: (02) 9887 4344 Fax: (02) 9870 7234

VIC 1/733 Whitehorse Rd. Mont Albert VIC 3127 Phone: (03) 9899 4844 Fax: (03) 9899 4833

QLD/NT 245 Riverside Drive. West End QLD 4101 Phone: (07) 3255 1211 Fax: (07) 3255 1911

SA/TAS Unit 4, 13 King William Rd. Unley SA 5061 Phone: (08) 8272 1300 Fax: (08) 8272 1199

WA 117 Great Eastern Highway. Belmont WA 6104 Phone: (08) 9478 1955 Fax: (08) 9277 2177

All specifications subject to change without notice

P-touch 2700



The PT-2700 from Brother



In a busy working environment, it's important to have the right equipment to hand. The Brother P-touch PT-2700 professional labelling machine will meet all your labelling requirements, helping you to organise and identify your items quickly and easily.

Features

- Standalone desktop or PC/Mac operation (via USB)
- Uses 3.5, 6, 9, 12, 18 and 24mm width TZ tape
- Large LCD with vivid back-light for easy viewing
- Time & date function for display for printing
- Prints up to 7 lines
- 8 fonts, 10 type styles
- 17 frame styles and 120 symbols
- 9 types of barcode supported
- Store up to 99 files for Memory Print
- Power supplied by 8 x AA batteries or AC adaptor (adaptor included)
- Includes 24mm x 5m black on white tape TZ-251 and adaptor

er – labelling at its best!



This feature packed machine prints up to 7 lines and includes a range of built-in fonts, frames and symbols. With the option of PC/MAC connectivity you'll be able to import barcodes, graphics, logos and icons, making the possibilities of label design endless.



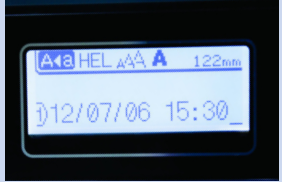
Time and Date Function –

Ideal for making labels for visitor badges, permits or food storage that require time and date accuracy.



Large LCD with Backlight –

16 character x 3 line LCD with a vivid backlight for easy viewing, even in dim lighting.



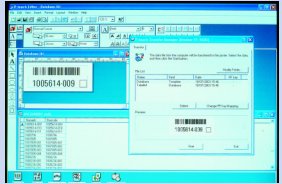
Memory Function & Label Templates –

Save and easily reprint your favourite labels at the touch of a button or use the pre-designed label templates to help you quickly create your own.



Barcodes –

Access the most popular barcodes built into the machine and even more through P-touch editor software.



Auto-Cutter –

Increases efficiency and keeps tape wastage to a minimum making it ideal for printing large volumes of labels.



PC/Mac Connectivity –

Connect easily to your PC/Mac and create labels with your special requirements using Brothers superior P-touch Editor software.



Wide Range of Tapes

TZ tapes are available in a large range of colours and widths. Standard tape length is 8m providing approximately 100 labels (based on 10 characters and standard label length of 8cm). For full tape line up see TZ tape catalogue.



Within the TZ tape range we also offer special tapes, including:

Strong Adhesive Tape - To give improved adhesion for those even more demanding applications and environments.

Tamper Evident Tape - Designed to leave a checker-board pattern as an indicator that the tape has been removed.

Iron-On Fabric Tape - Produces washable cloth labels ideal for labelling uniforms, work wear, bedding and table cloths.

Flexi ID Tape - Ideal for cylindrical surfaces and flagging cables.



P-touch